





## LUXE LAKES CPI SIGHT ART CENTER

**Completion Date:** May 2024

**Project Size:** 7,000 sq.ft (650m<sup>2</sup>)

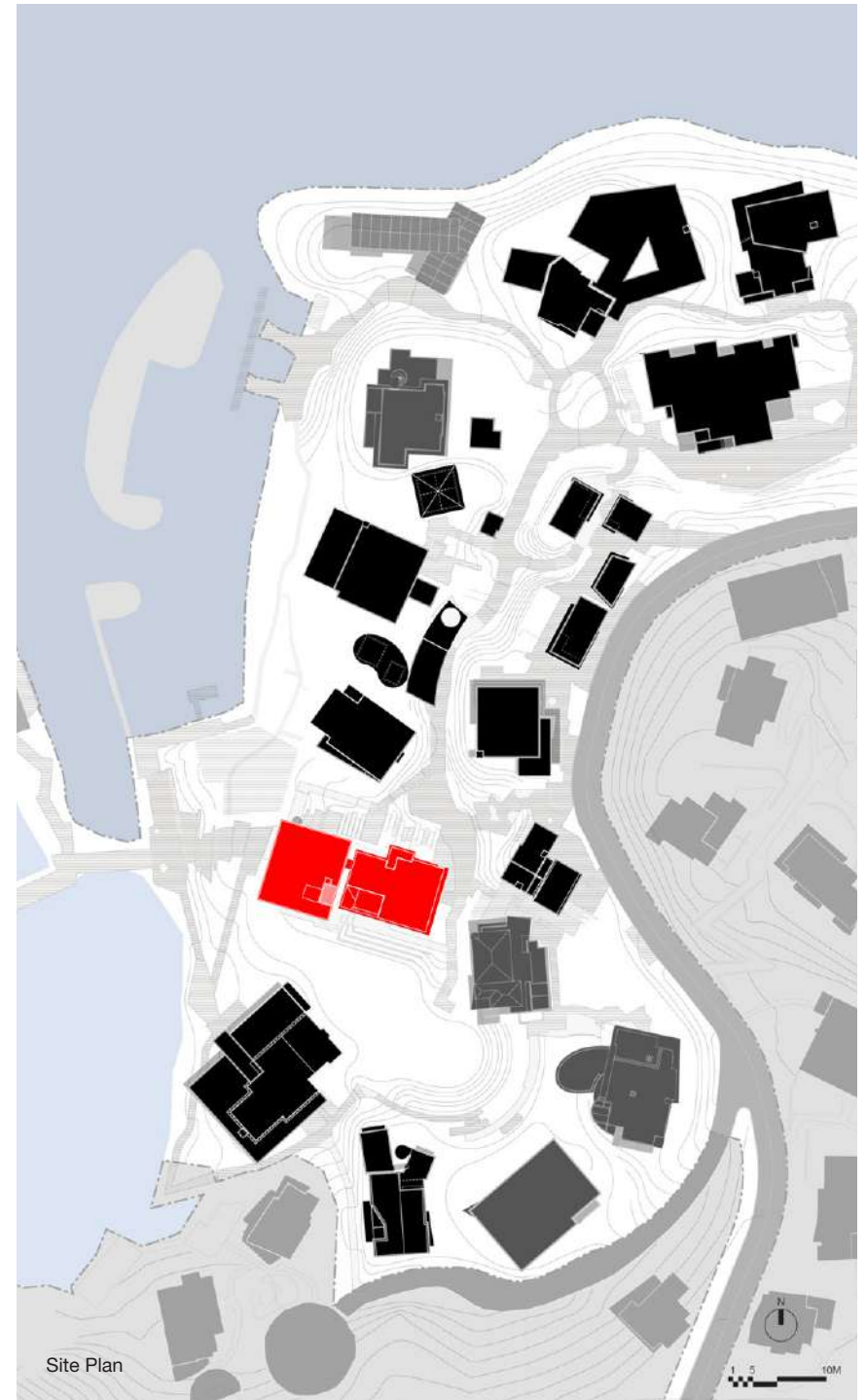
**Role of Nominee:** Lead Architect

**Collaborators & Funding Sources Expenses:**

This project was conducted via the nominee's office, where he serves as co-founder and design principal. A team of six employees from the office worked on the project from 2022 to 2024. Four students contributed to the project during the summers of 2022 and 2023 as interns of office and research assistants. The project also included collaboration with a paid lighting consultant, hired specifically for the lighting design.

**Student Compensation:**

Two students worked as design interns, funded by the nominee's office, while two others served as paid research assistants, each completing 600 hours of work.



## I. DESIGN PRINCIPLES: Unfolding Sustainability in Three Dimensions

The project embodies a holistic approach to sustainability, addressing it through three key dimensions. First, the project emphasizes **Environmental Sustainability** by repurposing an abandoned building into a book store and expanding it with a new architectural volume of a gallery. This adaptive reuse breathes new life into obsolete urban fabric, transforming it to accommodate contemporary communal needs while minimizing resource consumption and waste. By preserving and revitalizing the existing structure, the project reduces the environmental impact typically associated with demolition and new construction.

Second, the project prioritizes **Social Sustainability** by enhancing human sensory experiences and promoting everyday interactions within urban spaces. By designing spaces that encourage gathering, communication, and shared experiences, the project fosters social connections, enhances individual well-being, and promotes inclusion. These urban spaces become more than just physical environments; they are platforms for human engagement and community-building.

Third, the project is committed to **Cultural Sustainability**, striving to preserve and promote local identity in the face of globalizing forces. Rather than erasing the cultural context, the design integrates modern materials and forms with the traditional genius loci and vernacular spatial practices. This balance between the old and new ensures that cultural heritage is preserved and celebrated, enriching the modern urban landscape with the essence of place and memory.

## II. DESIGN CONCEPT: Creating “Average Temperature” and “Subtle Scenery”

The project aims to create a space for everyday life, where people can meet, gather, and enjoy. Drawing inspiration from the philosophical concepts of Japanese thinker Washida Kiyokazu, the project embraces two key ideas: “Average Temperature” and “Subtle Scenery”.

“**Average Temperature**” refers to the typical or ordinary state of a city’s atmosphere, mood, and cultural essence. It reflects the underlying character of a place—the steady, lived-in quality that defines the daily rhythm of life. The project seeks to capture this sense of ordinariness, making the space feel familiar and accessible to all who visit.

“**Subtle Scenery**,” or “**Subtle Landscapes**,” refers to the delicate, often overlooked aspects of our sensory experiences in the built environment. These subtle details—light, shadow, texture, and materiality—create a more intimate connection between people and the spaces they inhabit. The project’s design focuses on cultivating this understated beauty, allowing visitors to experience architecture in a way that resonates emotionally and sensorially.

## III. DESIGN TACTICS: Emphasizing Atmosphere Creation through Three Strategies

To achieve the desired Subtle Scenery and create a lasting atmospheric impact, the design employs three key strategies. The overarching question guiding the design process was: how can we move beyond aesthetic trends and architectural

styles to create spaces that deeply resonate with people through the seamless integration of architecture and environment? After repeated design iterations, the answer lay in an unwavering focus on atmosphere creation.

First, the project makes full use of the site’s micro-topography to create **terraces and split-level spaces**. By following the natural contours of the land, the architecture harmonizes with its surroundings, creating a sense of unity between the built form and the landscape. These terraces also create a sense of layered spatial transparency, where each level offers new vistas and sensory experiences. Visual screens and subtle shifts in elevation contribute to a dynamic yet serene spatial experience.

Second, the design emphasizes the creation of **in-between spaces or semi-open spaces**, blurring the boundaries between indoors and outdoors. Through the use of cantilevered structures, the project integrates the site’s natural ecology into the architectural space, allowing people, buildings, and nature to coexist in a tranquil environment. These spaces are neither fully enclosed nor entirely open; they act as thresholds where everyday life and ceremonial events can unfold simultaneously. The stepped terraces further enhance this blend of the social and the natural, offering opportunities for casual gatherings and public events alike.

Third, the project adopts a **simple and effective form** that softens the architectural presence and makes the building approachable while maintaining an element of charm. The minimalist aesthetic, achieved through a diverse palette of materials such as concrete, glass, paint, and metal, ensures that the architecture does not overwhelm its surroundings. Instead, it becomes part of the landscape, subtly guiding visitors’ attention to the natural environment while offering moments of quiet reflection within the built space.

These strategies come together to create an architecture that is deeply integrated with its environment, both physically and emotionally. The result is a space that feels timeless, approachable, and, above all, meaningful—a place where sustainability is not merely a technical goal but a lived experience.

## IV. DESIGN CONTENT: Renovation and Extension

The project, aimed at providing both an artistic and social space, consists of three parts: a newly built lakeside **gallery**, a renovated **bookstore** facing inland, and an **amphitheater** under the gallery and in front of the bookstore as a gathering space for visitors to engage and interact.

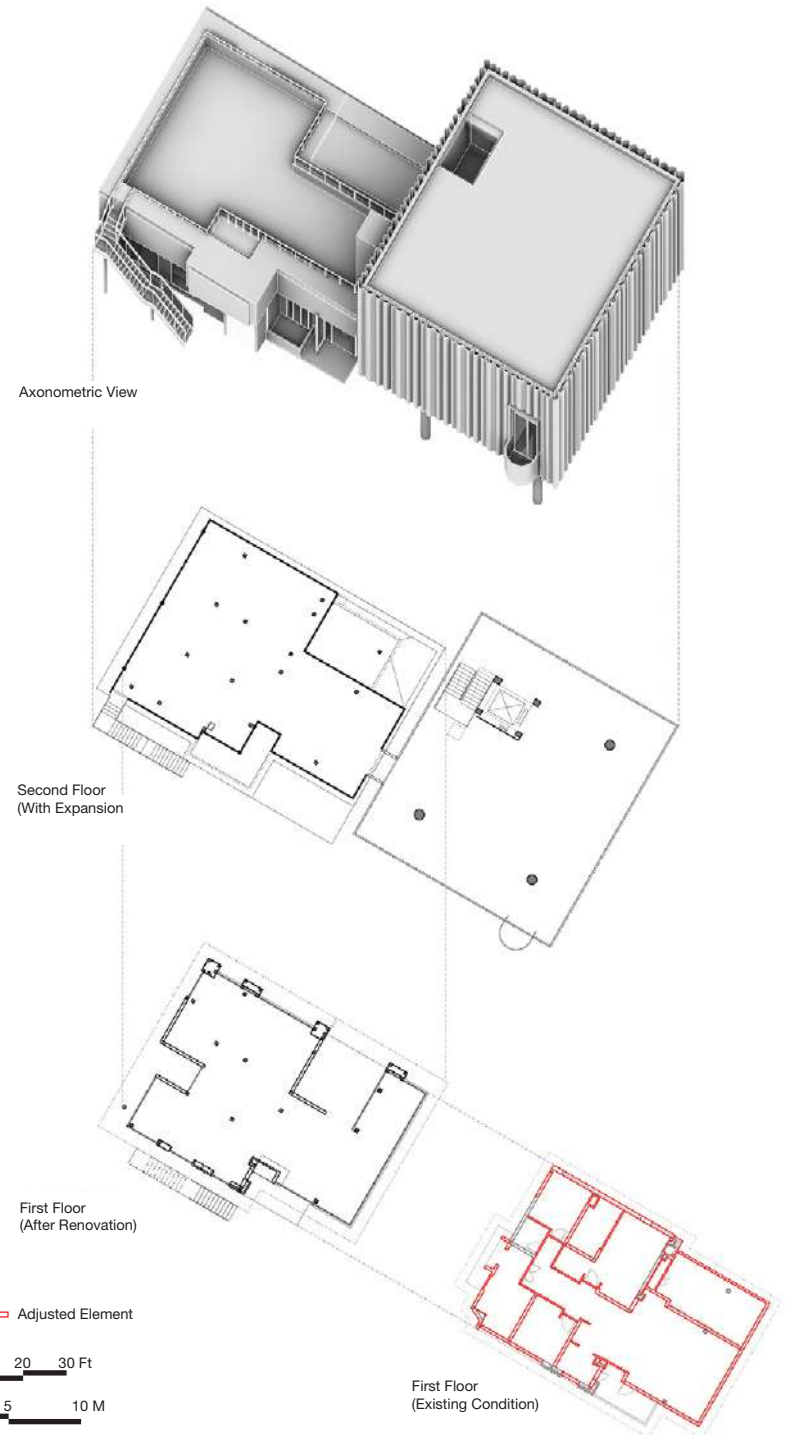
The bookstore is a minimalist box with slight adjustments, including a slightly overhanging roof. The lower section combines layered concrete and glass, blending real and virtual elements. With an abundance of window openings, the building’s volume is visually softened, allowing it to merge seamlessly with the surrounding natural environment.

The **gallery façade** is one of the project’s key features. It consists of diamond-shaped stretched aluminum mesh with undulating contours, placed outside the concrete wall. The mesh is bent into three different wave-like forms,

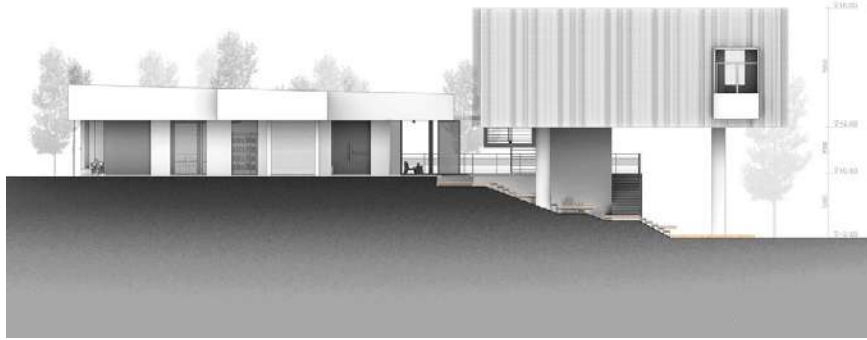


transforming the flat material into a self-supporting, three-dimensional surface. This technique lightens the grid and allows for thinner vertical mullions. The corrugated façade interacts with sunlight, creating different forms of projection throughout the day and bringing a dynamic yet pure beauty to the building.

After sunset, the night sky hides the building's volume, leaving only the illuminated screen. The changing light effects create dazzling visual displays: at times the façade appears to shimmer like the adjacent lake, while at other times it evokes a starry sky. Visitors arriving in the evening experience an abstract, dream-like natural atmosphere, enhancing their state of mind. Square windows of varying sizes punctuate the simple façade, with warm light filtering through the wavy metal mesh and windows, creating a welcoming and immersive interior environment.

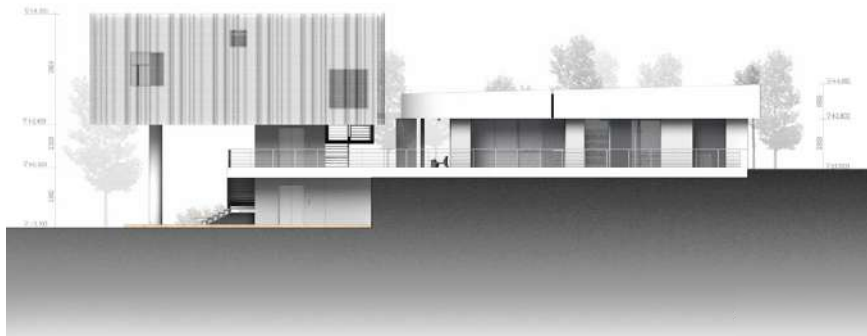






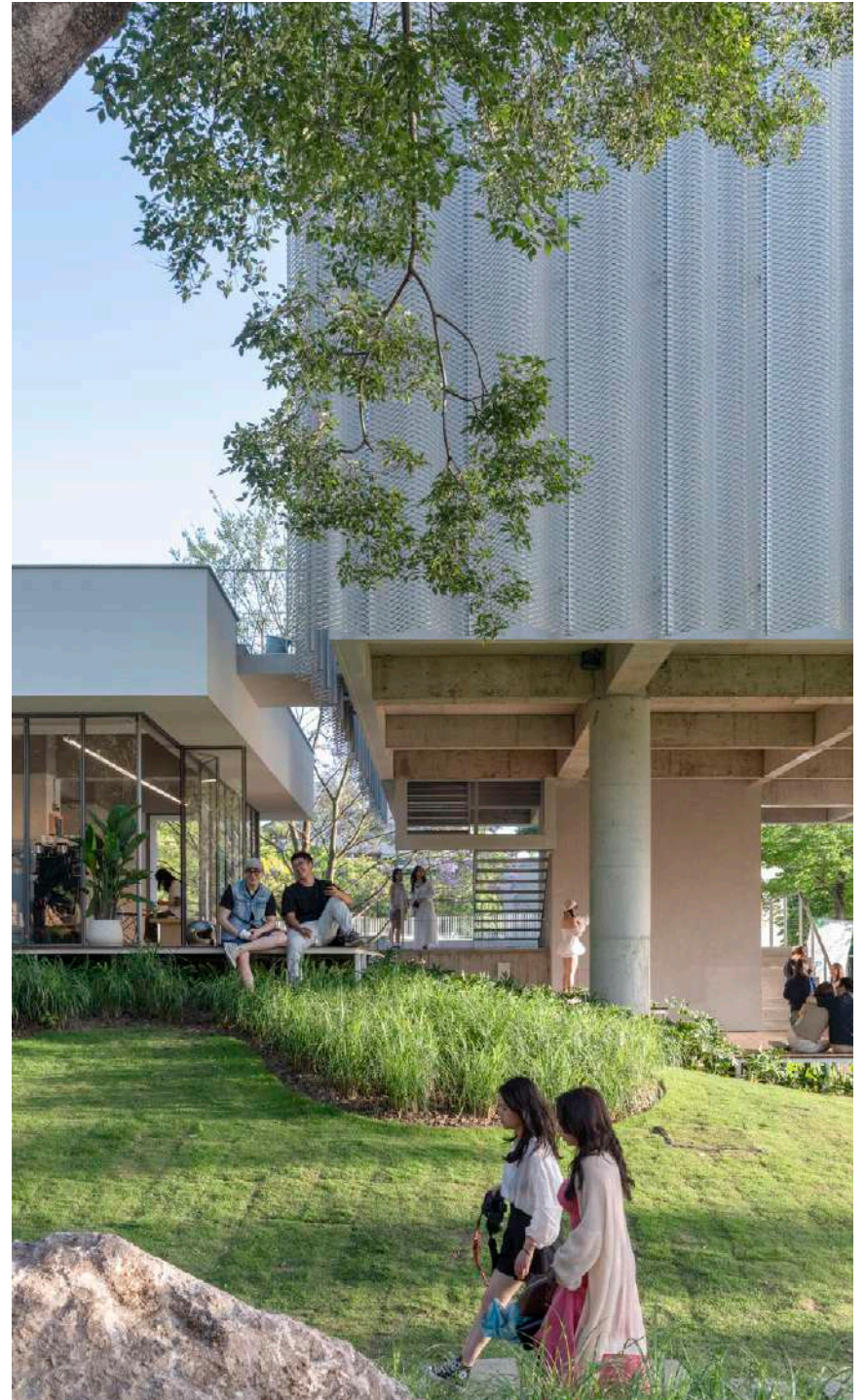
North Facade ▲

South Facade ▼



View from South ▼

Connection between Renovation (Existing) and Expansion Parts ►







Looking from south





East Elevation ▼

East Entrance and Bookstore (Renovation Part) ▲▶







West Entrance and Gallery (Expansion Part) ▲



Amphitheater below Gallery ▲▼

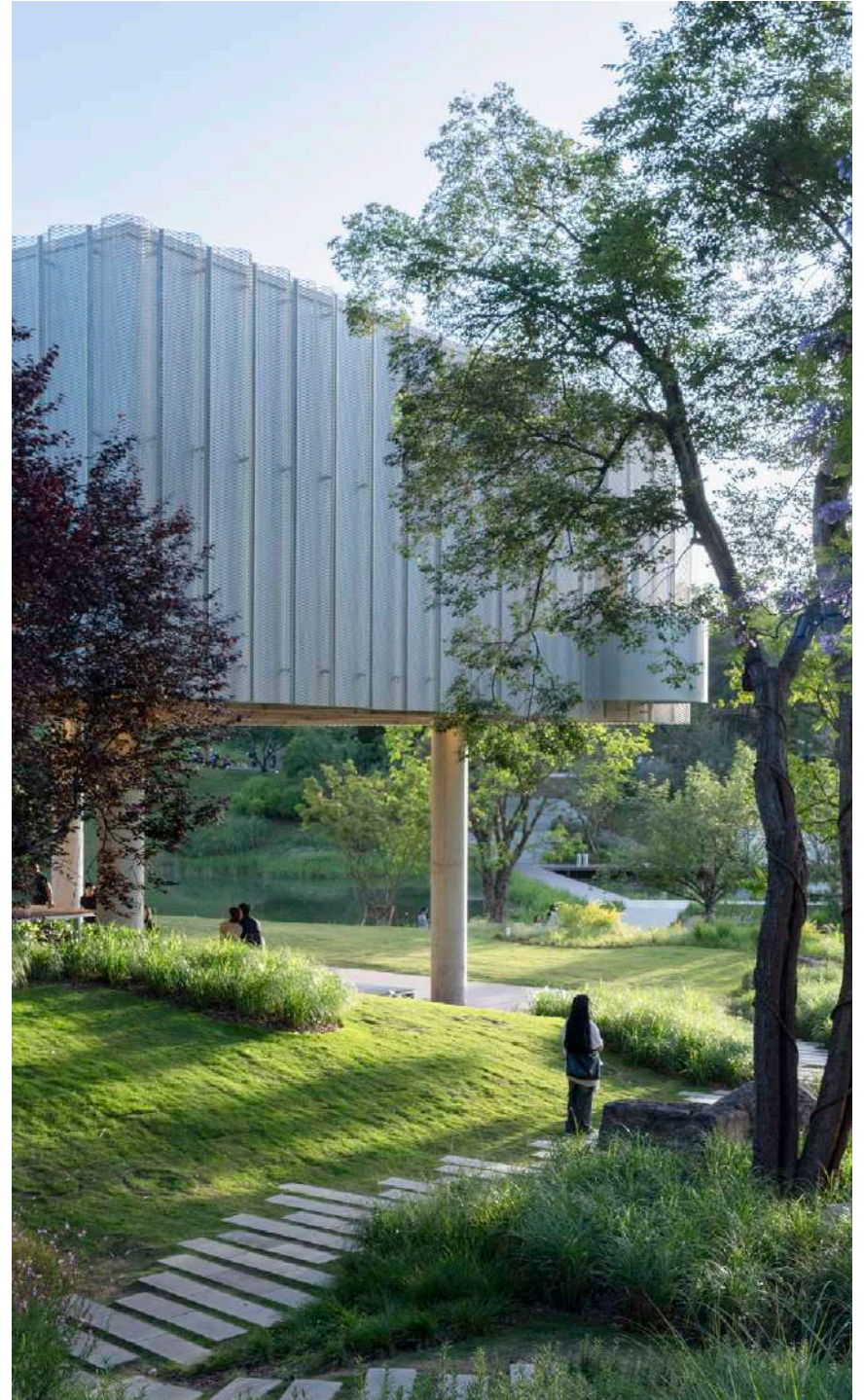






In-between Space, blending nature and architecture



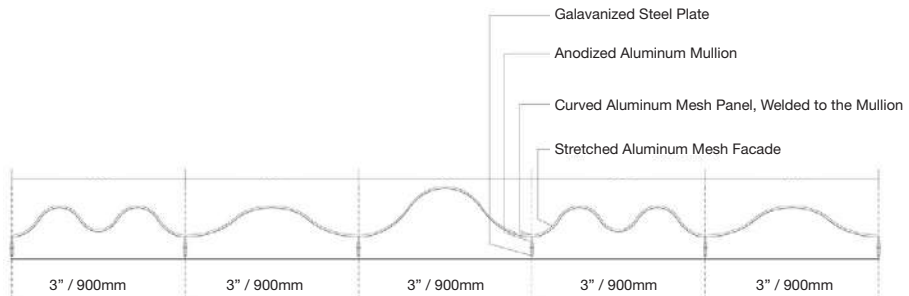






Metal Screen Profile ▲▼

Night Lighting Effect ►







Night view from west





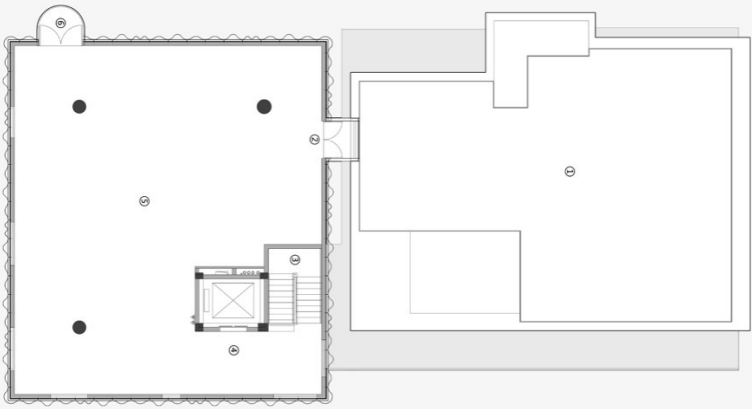
Daytime View ▲▼



Night View ▲▼



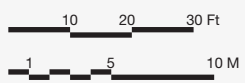




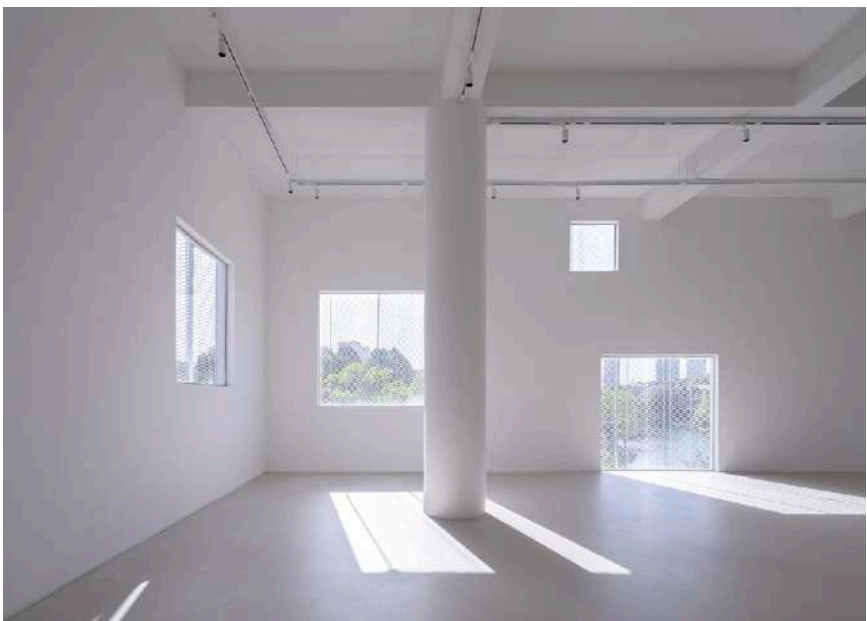
- ① Bookstore Rooftop Platform
- ② Roof Platform Entrance
- ③ Staircase
- ④ Elevator Hall
- ⑤ Exhibition Hall
- ⑥ Balcony

Second Floor Plan ▲

First Floor Plan ▼



- ① Bookstore Entrance
- ② Exhibition Area
- ③ Exhibition Area 2
- ④ Display Area 1
- ⑤ Bar Counter
- ⑥ Toilet
- ⑦ Air Conditioning
- ⑧ Reading Area
- ⑨ Outdoor Reading Area
- ⑩ Platform Entrance
- ⑪ Landscape Platform
- ⑫ Elevator



Gallery Interior (Second Floor) ▲

Bookstore Interior (First Floor) ▼







Bookstore Interior





Looking from North